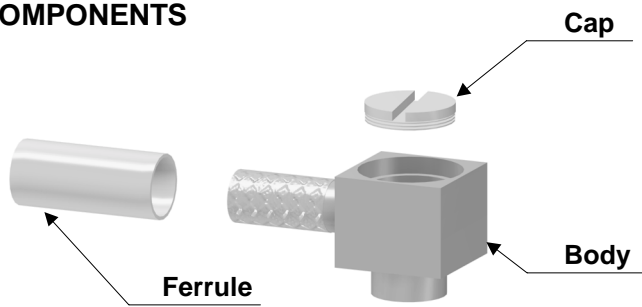
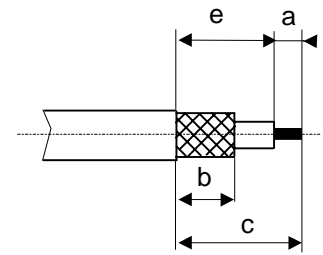


# Crimp 07 : R/A screw cap

## COMPONENTS

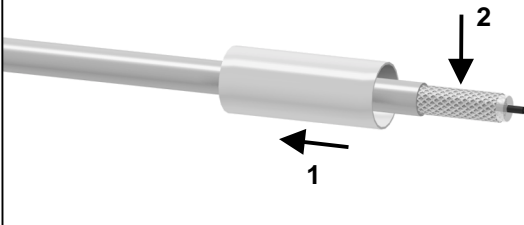


## STRIPPING DIMENSIONS



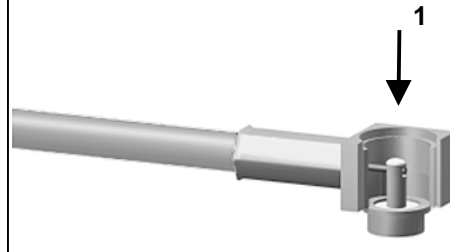
1

Slide the ferrule onto the cable.  
Strip the cable.



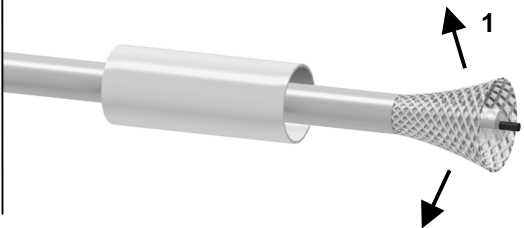
4

Solder the inner conductor.



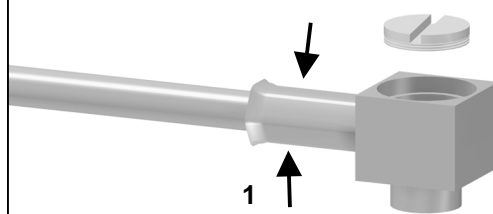
2

Fan the braid.



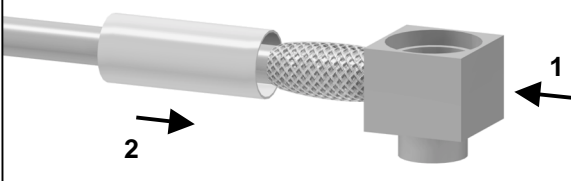
5

Crimp the ferrule with crimping tool ( see connector TDS ).



3

Push the connector body under the braid.  
Slide the ferrule over the braid.



6

Screw the nut into the body.

